



[Blheli Suite For Mac](#)

The screenshot shows the BLHeliSuite 16.2.14.6.0.1 interface. A dialog box titled "Found Multiple ESC configuration in SiLabs mode:" is displayed in the center. The dialog lists four ESC configurations:

- ESC# 1 : G_L_30 - Rev. 16.2 - Multi [MASTER] (BLHeli Bootloader)
- ESC# 2 : G_L_30 - Rev. 16.2 - Multi [SLAVE] Motor Direction: Reversed (BLHeli Bootloader)
- ESC# 3 : G_L_30 - Rev. 16.2 - Multi [SLAVE] Motor Direction: Reversed (BLHeli Bootloader)
- ESC# 4 : G_L_30 - Rev. 16.2 - Multi [SLAVE] (BLHeli Bootloader)

The background interface shows various settings for ESC# 1, including Low Voltage Limiter (3.2 Volt / cell), Governor Mode (Tx), Governor P-Gain (x 1.00), Governor I-Gain (x 1.00), Governor Range (High), and Governor Target RPM (THR 70 % = 6092 rpm). The status bar at the bottom indicates "Multiple ESC / Master#1" and "Found Multiple ESC: ESC#1;ESC#2;ESC#3;ESC#4;".

[Blheli Suite For Mac](#)



Download The first step is to download the latest firmware images for both Betaflight and BLHeli.

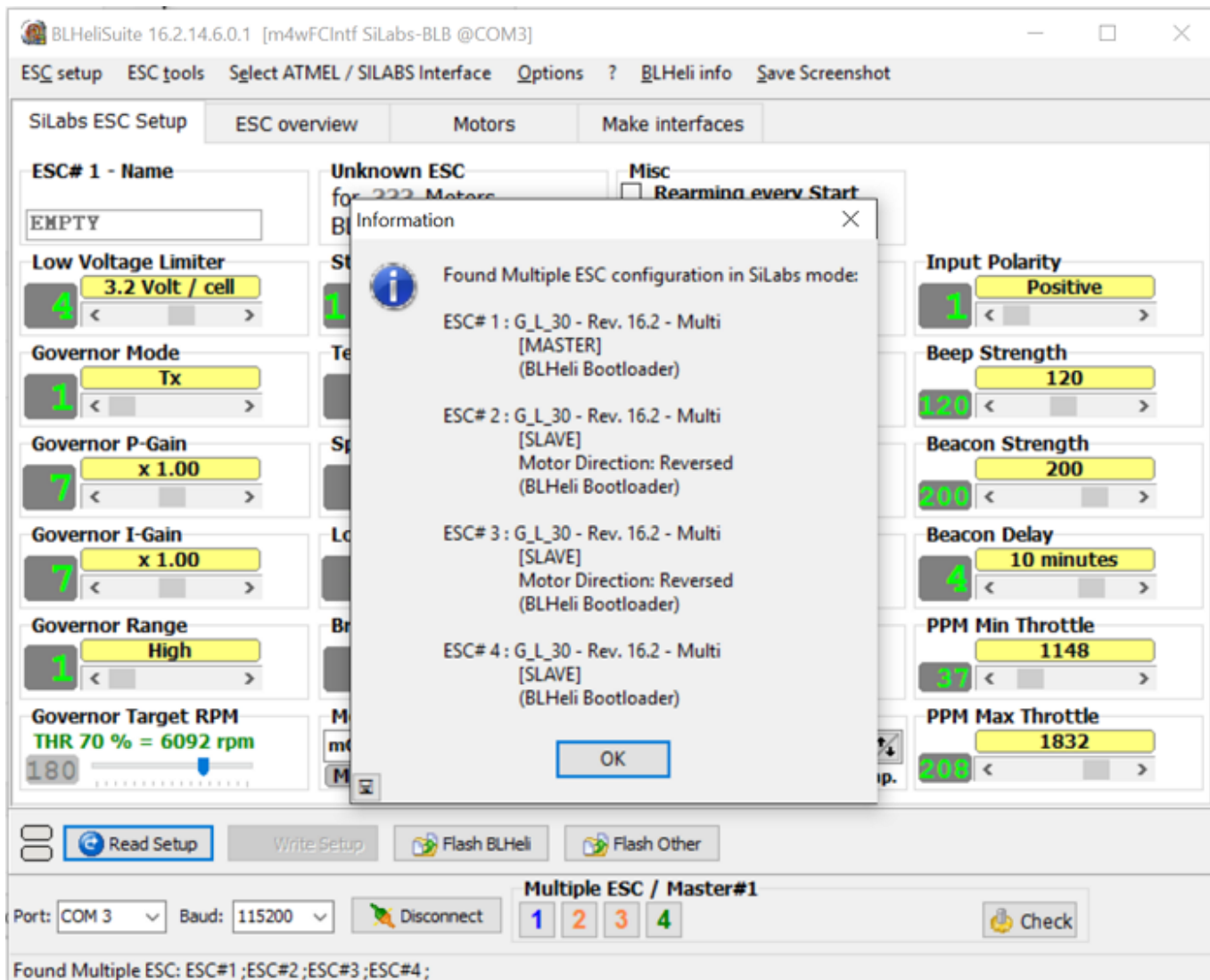
1. [blheli suite](#)
2. [blheli suite 32 configurator](#)
3. [blheli suite for mac](#)

Betaflight Betaflight releases can be found here: When you go to the page, you'll notice a long list of downloadable.

blheli suite

blheli suite, blheli suite 32, blheli suite 32 configurator, blheli suite vs configurator, blheli suite for mac, blheli suite download windows, blheli suite 8 bit, blheli suite mac os, blheli suite download mac, blheli suite arduino [Ices 003 Class B Motherboard Manual](#)

One important thing to note is that as of 2 9 0, Betaflight has changed pretty radically and has completely diverged from Cleanflight.. If you're following along with our guides, we highly suggest you flash BetaFlight.. Blheli Suite For MacBlheli Suite For Mac OsBlheli Suite For MacCross-platform configuration tool for BLHeli-based electronic speed controllers.. If you choose to go with Cleanflight, the steps and methods will be very similar. [Download Fifa 08 Crack Full Version](#)



[Excel For Mac Simply Says Opps](#)

blheli suite 32 configurator

[Sorenson Squeeze 9 Serial Number](#)

Prerequisites This article is only applicable to you if you are working on a quadcopter that: • Has a flight controller that supports the Cleanflight firmware.. After you have built your quad and performed and electronics "", you're going to want to configure the microprocessors on your flight controller and ESCs.. hex and bin files You want the hex file that goes with your flight controller board. [Dirt 4 Free Download Mac](#)

blheli suite for mac

[Tmgenc Authoring Works 4 Full Crack Idm](#)

The first step of this process is flashing the latest firmware on all of the devices.. Which of these to pick you can determine by looking at the text on the processor on your board.. Is a list of FCs that we recommend • Has ESCs that run BLHeli Is a list of ESCs that we recommend.. If you want to try out the KISS FC and firmware, you should search elsewhere – OscarLiang has a great on his site.. 90% of the time these boards use an identical layout to either the NAZE target or the SPRACINGF3 target..

Most first party boards will have their own entry (for instance, the latest XRacer F3 board is “*X_RACERSPI.. Betaflight / KISS / Cleanflight – Pick your poison One decision you’ll need to make is what firmware you want to flash on your flight controller in the first place.. hex” and the Luminier Lux is “*LUX_RACE hex”) If your board doesn’t show up on this list, it is likely that it is a clone board of some type.. Driver downloads for BAFO USB-serial adapter Drivers for BAFO BF-810 USB-Serial adapter • For Windows: NOTE: as of April 2010 the Windows driver download has been updated for compatibility with Windows 7 in addition to the older Windows operating systems. ae05505a44 [Killing Floor More Weapon Downloads](#)

ae05505a44

[Dbz Sagas Wii Download High Compress](#)